



SPECIFICATIONS OF ALUMINUM PARTITIONS SCP – S3000-D

A) S3000 D – Double glazing

A1) Aluminum profile

Glass movable floor-ceiling partitions with perimeter frame, 40mm wide and 50mm high made of aluminum profile type SCP – S3000, thermosetting workable aluminum alloy according to specifications A-GS(50S), according to AFNOR (AlMgSi0.5 according to DIN), average value hardness 76 BRINNELL (HB10), with breaking stress 23kp/mm² and elongation $\delta_{50}=6\%$.

The profiles are anodized or powder coated, with paint thickness of 80mm, in the color of the supervisor's choice.

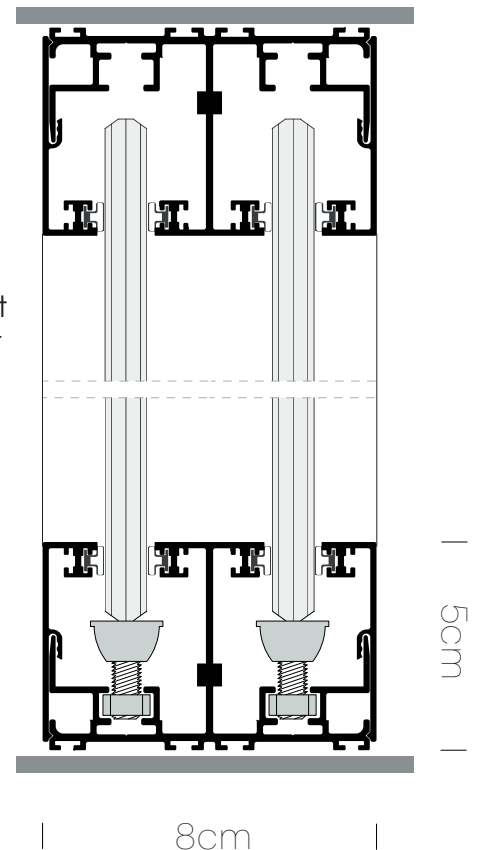
The fixing and securing of the glass panes to the main frame of the partition (Profile No. 3002) is done with the snap-on application of the secondary element (Profile No. 3003).

Connection between the profiles is made with special galvanized steel joint parts, 2mm thick, which stabilize the main profiles between each other continuously and angularly to avoid drilling holes in visible parts and to ensure the best result.

B2) Glazing

The glazing consists of a double pane of glass 8 or 10mm thick, with treated edges, where there is a joint between them. It is recommended the use of 5+5mm or 4+4mm triplex glazing with an intermediate acoustic membrane. The creation of as much transparency as possible in the space is achieved by using transparent profiles, which have a double-adhesive polycarbonate profile at their points of contact with the glass panes and which are used to join them in straight sections, 90° and 135° angles, as well as cable connections Taf (T) and cross (+).

Before the secondary profiles are placed around the perimeter of the main one, secure holding parts for the glazing are applied every 60cm ensuring the safe disassembly or visit of the structure.

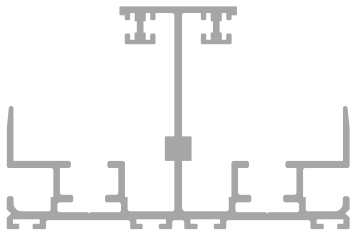




B3) Doors

Securit glass doors 8-10cm or Securit triplex with intermediate acoustic membrane, opening or sliding and wooden pressed doors. The glass doors can be transparent, sandblasted or film pasted, while the pressed doors are lined with formica/natural veneer or lacquered. The way the doors are supported is chosen according to their use, while the lock options are Meroni glass type magnetic lock with knob.

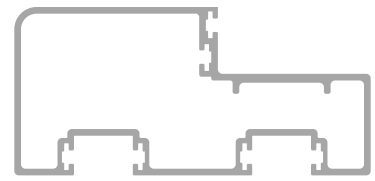
B5) Profile catalogue for double glazing



3002
Length: 6m

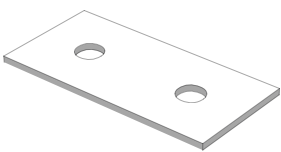


3003
Length: 6m

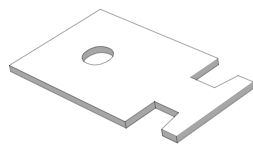


3000-K2
Length: 6m

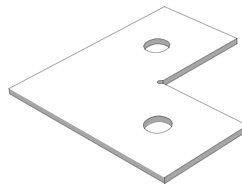
B6) Spare parts catalogue for double glazing



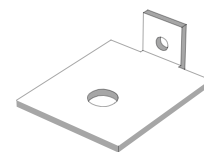
S3000-1
Continuity joint



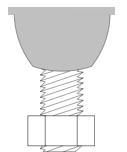
S3000-L
Vertical joint



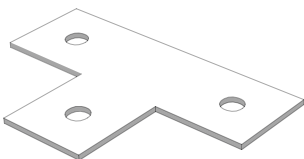
S3000-2
Angular joint



S3000-K
Door frame joint



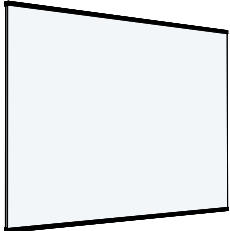
Reg-3000
Glass height
regulator



S3000-T
T joint



C) Partition typology

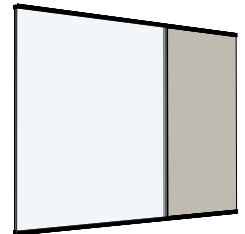


Type 1

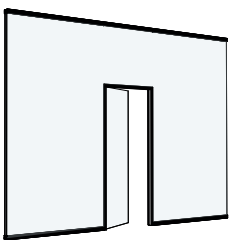
SCP series S3000 D glass movable partitions, with acoustic insulation up to 42dB, total thickness 80mm, with two triplex glass panes 5+5mm thick and aluminum perimeter profile. The profiles are powder-coated according to RAL color scale chosen by supervisor. Self-adhesive polycarbonate cross-section "H" profile is applied between the glass panes.

Type 2

SCP series S3000 D glass movable partitions, with acoustic insulation up to 42dB, total thickness 80mm, with two triplex glass panes 5+5mm thick, in combination with blind surfaces with double-sided melamine coating and aluminum perimeter profile. The profiles are powder-coated according to RAL color scale chosen by supervisor. Self-adhesive polycarbonate cross-section "H" profile is applied between the glass panes.



D) Door typology

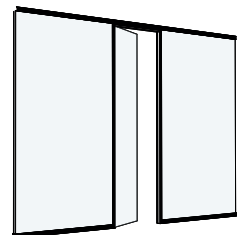


Type 1

SCP series S3000 D glass movable partitions, with acoustic insulation up to 42dB, total thickness 80mm, with two triplex glass panes 5+5mm thick and aluminum perimeter profile, with door frame and glass or pressed wooden door, height up to 2100mm. The profiles are powder-coated according to RAL color scale chosen by supervisor. Self-adhesive polycarbonate cross-section "H" profile is applied between the glass panes.

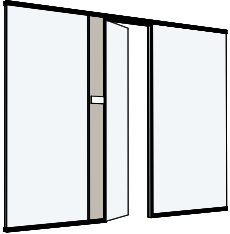
Type 2

SCP series S3000 D glass movable partitions, with acoustic insulation up to 42dB, total thickness 80mm, with two triplex glass panes 5+5mm thick and aluminum perimeter profile, with door frame and glass or pressed wooden door, over the entire height. The profiles are powder-coated according to RAL color scale chosen by supervisor. Self-adhesive polycarbonate cross-section "H" profile is applied between the glass panes.





Τύπος 3



SCP series S3000 D glass movable partitions, with acoustic insulation up to 42dB, total thickness 80mm, with two triplex glass panes 5+5mm thick and aluminum perimeter profile, with door frame and glass or pressed wooden door, over the entire height. Next to each door is applied a support with double-sided melamine lining.

The profiles are powder-coated according to RAL color scale chosen by supervisor. Self-adhesive polycarbonate cross-section "H" profile is applied between the glass panes.

