



## SPECIFICATIONS OF ALUMINUM PARTITIONS SCP – S3000

### A) S3000 – Single glazing

#### A1) Aluminum profile

Glass movable floor-ceiling partitions with perimeter frame, 40mm wide and 50mm high made of aluminum profile type SCP – S3000, thermosetting workable aluminum alloy according to specifications A-GS(50S), according to AFNORON (AlMgSi0.5 according to DIN), average value hardness 76 BRINNELL (HB10), with breaking stress 23kp/mm<sup>2</sup> and elongation  $\delta_{50}=6\%$ .

The profiles are anodized or powder coated, with paint thickness of 80mm, in the color of the supervision's choice.

The fixing and securing of the glass panes to the main frame of the partition (Profile No. 3001) is done with the snap-on application of the secondary element (Profile No. 3003).

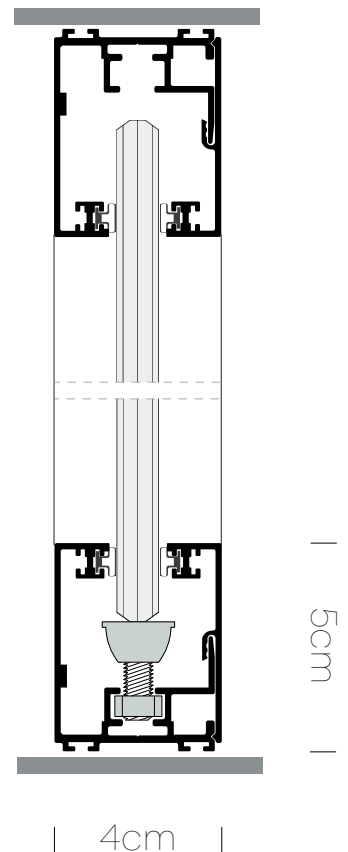
The connection between the profiles is made with special galvanized steel joint parts, 2mm thick, which stabilize the main profiles between each other continuously and angularly to avoid drilling holes in visible parts and to ensure the best result.

#### A2) Glazing

The glazing consists of a single pane of glass 8 or 10mm thick, with treated edges, where there is a joint between them.

It is recommended the use of 5+5mm or 4+4mm triplex glazing with an intermediate acoustic membrane. The creation of as much transparency as possible in the space is achieved by using transparent profiles, which have a double-adhesive polycarbonate profile at their points of contact with the glass panes and which are used to join them in straight sections, 90° and 135° angles, as well as cable connections Taf (T) and cross (+).

Before the secondary profiles are placed around the perimeter of the main one, secure holding parts for the glazing are applied every 60cm ensuring the safe disassembly or visit of the structure.





### A3) Doors

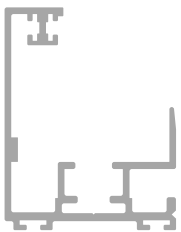
Securit glass doors 8-10cm or Securit triplex with intermediate acoustic membrane, opening or sliding and wooden pressed doors. The glass doors can be transparent, sandblasted or film pasted, while the pressed doors are lined with formica/natural veneer or lacquered. The way the doors are supported is chosen according to their use, while the lock options are Meroni glass type magnetic lock with knob.

### A4) Decorative profile

The series is completed by decorative aluminum profiles which are electrostatically painted in the desired color.

Stickers are placed directly on the glass, vertically or horizontally, they divide the pane into smaller ones, according to the desired distribution and are placed on both sides of it. This makes it possible to glue or replace them easily. They can also be placed in already existing partitions.

### A5) Profile catalogue for single glazing



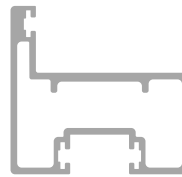
3001

Length: 6m



3003

Length: 6m



3000-K1

Length: 6m

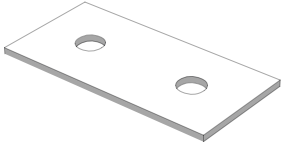


3000-SQ

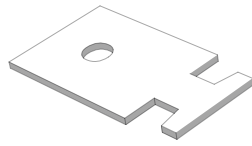
Length: 5.8m



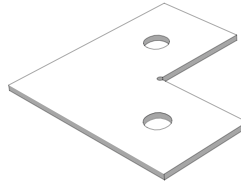
## A6) Spare parts catalogue for single glazing



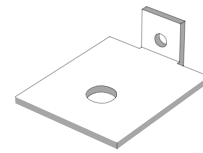
S3000-1  
Continuity joint



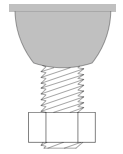
S3000-L  
Vertical joint



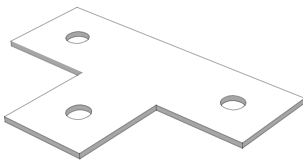
S3000-2  
Angular joint



S3000-K  
Door frame joint

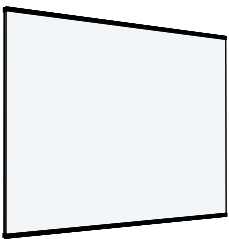


Reg-3000  
Glass height  
regulator



S3000-T  
Tjoint

## B) Partition typology



### Type 1

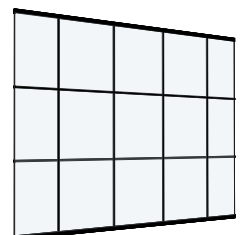
SCP series S3000 movable glass partitions, with acoustic insulation up to 36dB, total thickness 40mm, with a triplex glass pane 5+5mm thick and aluminum perimeter profile. The profiles are powder-coated according to RAL color scale chosen by supervisor.

Self-adhesive polycarbonate cross-section "H" profile is applied between the glass panes.

### Type 2

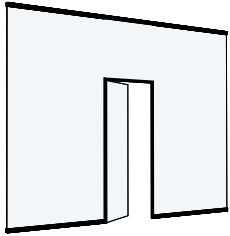
SCP series S3000 glass movable partitions, with acoustic insulation up to 36dB, total thickness 40mm, with a triplex glass pane 5+5mm thick and aluminum perimeter profile. The profiles are powder-coated according to RAL color scale chosen by supervisor. Self-adhesive polycarbonate cross-section "H" profile is applied between the glass panes.

Double-sided adhesive decorative aluminum profiles are applied to the surface of the glass panes, dividing the glass surfaces by the choice and indicating of supervision.





## C) Doors typology



### Type 1

SCP series S3000 glass movable partitions, with acoustic insulation up to 36dB, total thickness 40mm, with a triplex glass pane 5+5mm thick and aluminum perimeter profile, with door frame and glass or pressed wooden door, height up to 2100mm. The profiles are powder-coated according to RAL color scale chosen by supervisor.

Self-adhesive polycarbonate cross-section "H" profile is applied between the glass panes.

### Type 2

SCP series S3000 glass movable partitions, with acoustic insulation up to 36dB, total thickness 40mm, with a triplex glass pane 5+5mm thick and aluminum perimeter profile, with door frame and glass or pressed wooden door, over the entire height. The profiles are powder-coated according to RAL color scale chosen by supervisor.

Self-adhesive polycarbonate cross-section "H" profile is applied between the glass panes.

